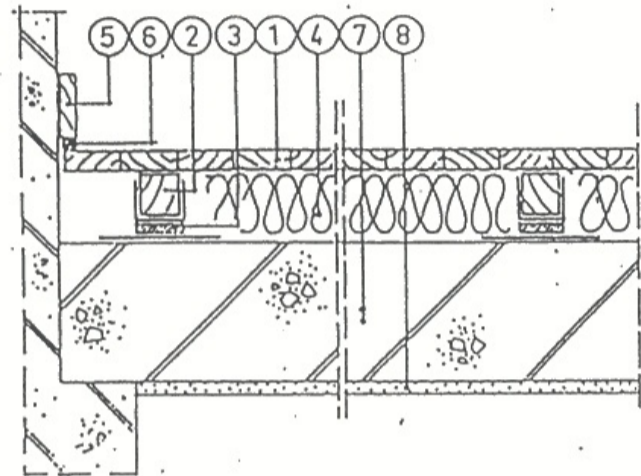


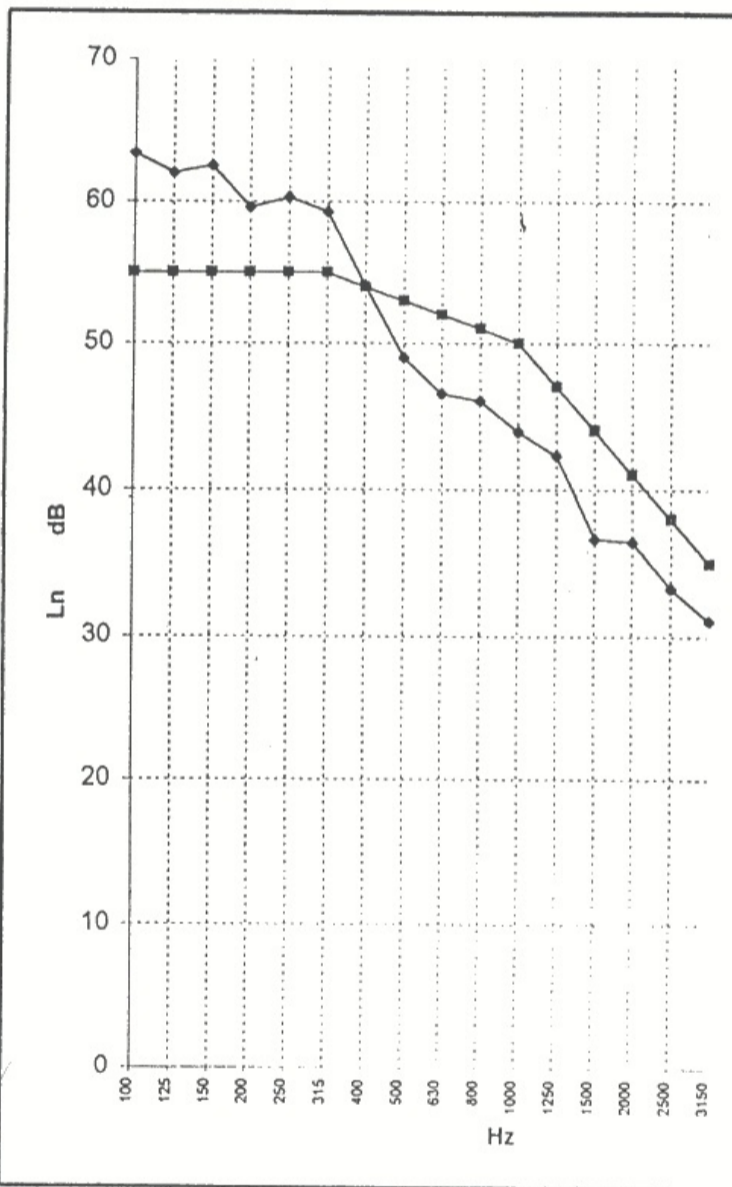
**SOUND REDUCTION INDEX\* according to ISO 140.3**

CLIENT : ETA ACOUSTIKI LTD KABOUROGLOU 19 11525 ATHENS  
 TEL. +3 01 6779875 FAX: +3 01 6779269

Item Tested: FLOATING WOODEN FLOOR



1. Wooden floor (parquet) 2cm
2. Wooden beam 5x5cm
3. Antivibration mount VIBRO-FM
4. Glasswool 6cm
5. Wallboard (do not touch on the parquet)
6. Silicon
7. Reinforced concrete 15cm
8. Plaster 1cm



L'n: Normalized structural sound pressure level  
 Element size : 15,66 m2  
 Weight per specimen surface area : 397 Kg/m2  
 Total item thickness : mm  
 Transmission room volume : 66,79 m3  
 Receive room volume : 58,59 m3  
 Room state : Empty  
 Hammer type : Without elastic cover  
 Test sound : Standard beat-generator  
 Receiver filter : 1/3 octave

Evaluation : ISO 717-2  
**WEIGHTED NORMALIZED STRUCTURAL SOUND PRESSURE LEVEL**  
**L'n,w = 53 dB**

f (Hz)	100	125	150	200	250	315	400	500	630	800	1000	1250	1500	2000	2500	3150
L'n (dB)	63,4	62,0	62,5	59,6	60,3	59,3	54,1	49,0	46,5	46,0	43,9	42,3	36,7	36,5	33,3	31,1
D.A.>8	8,4															

D.A.=maximum deviation

**ACOUSTICAL LABORATORY OF N.T.University of Athens**

THE DIRECTOR OF LABORATORY

DATE : 12/3/1996  
 CODE : K - ETA 010

\*Translation of the original Greek Certificate